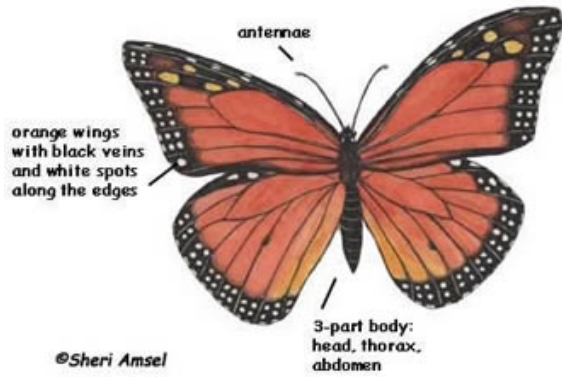


# Monarch Butterfly

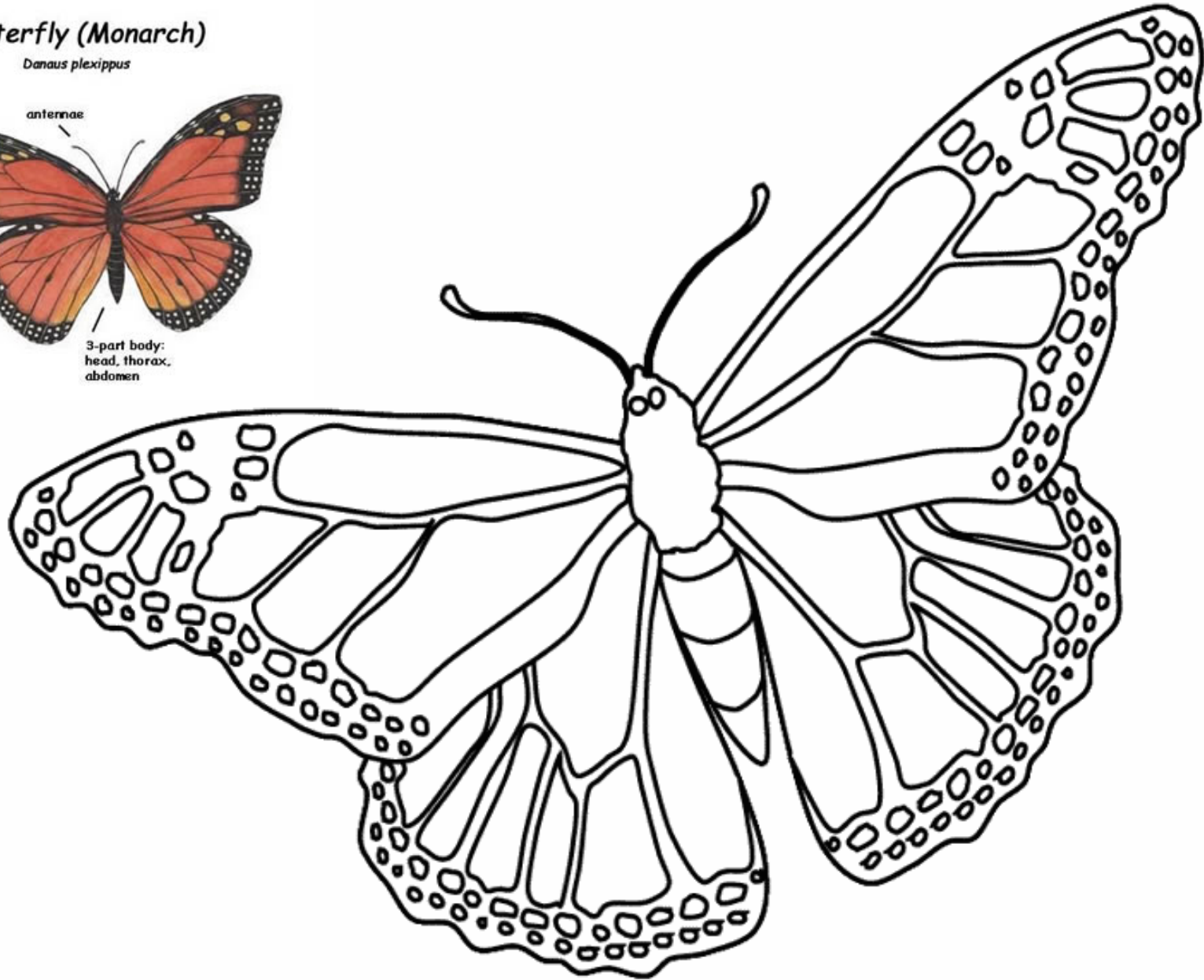
Color

## Butterfly (Monarch)

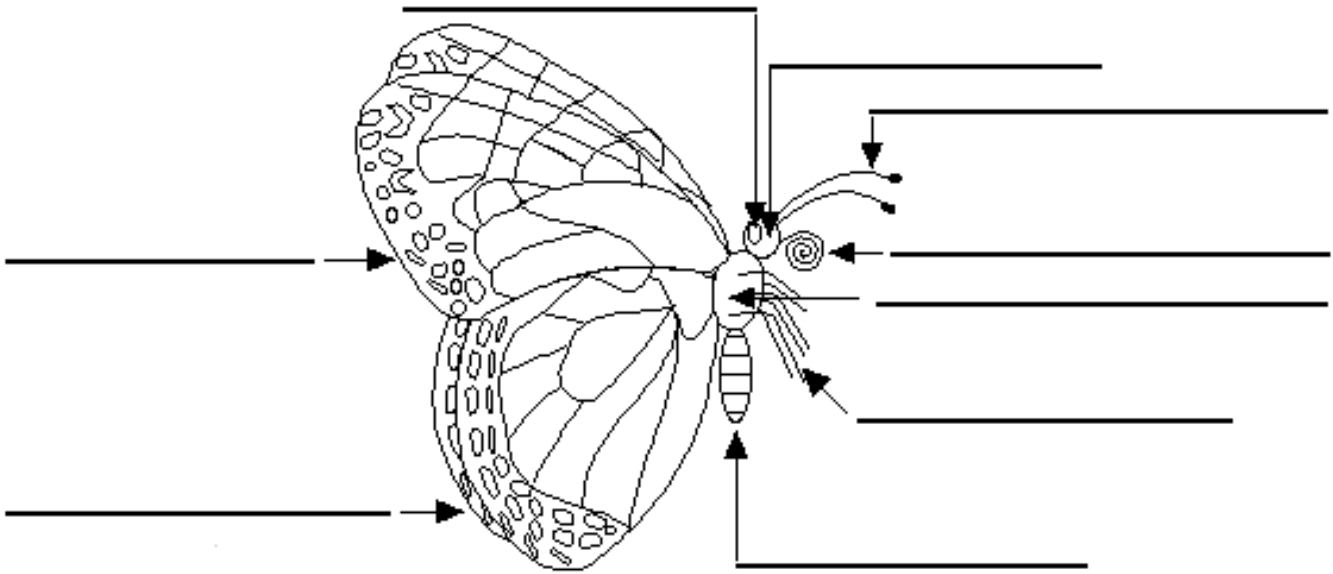
*Danaus plexippus*



©Sheri Amsel



## Label the Basic Parts of a Butterfly



**Abdomen** - The abdomen is the segmented tail area of an insect that contains the heart,

**Antenna** - An antenna is a sensory appendage that is attached to the head of adult insects. Antennae are used for the sense of smell and balance. Butterflies have two antennae with clubs at the end.

**Compound Eye** - Insect compound eyes are made up of many hexagonal lenses.

**Fore wing** - The fore wings are the two upper wings.

**Head** - The head is the part of the insect that contains the brain, two compound eyes, the proboscis, and the pharynx (the start of the digestive system). The two antennae are attached to the head.

**Hind wing** - The hind wings are the two lower wings.

**Proboscis** - Adult butterflies sip nectar and other liquids using a spiral, straw-like proboscis located on their head.

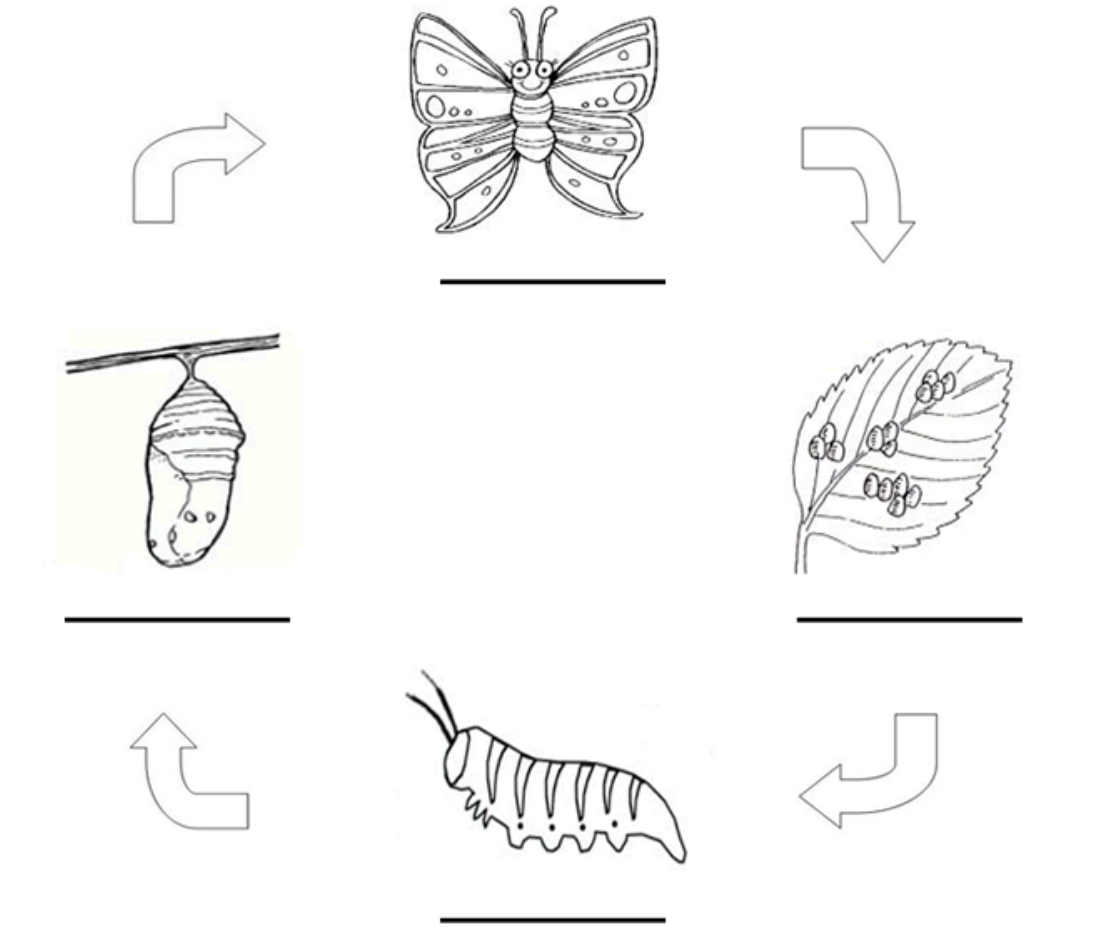
**Thorax** - The thorax is the body section between the head and the abdomen. The legs and wings attach to the thorax.

**Legs** - All adult butterflies have six legs. The two forelegs of some butterfly species are tiny.

# Life Cycle

## Monarch Butterfly

Label using the descriptions below



**Egg** - Adult female monarchs lay their eggs on the underside of milkweed leaves. These eggs hatch, depending on temperature, in three to twelve days.

**Larva (Caterpillar)** – The larvae feed on the plant leaves for about two weeks and develop into caterpillars about 2 inches long. The monarch butterfly is sometimes called the "milkweed butterfly" because its larvae eat the plant. milkweed is the only thing the larvae can eat!

**Pupa (Chrysalis)** - inside the greenish pupa, the caterpillar changes into a butterfly. caterpillar forms a shiny green and gold speckled chrysalis. This is the pupal stage.

**Butterfly** - After about 14 days, the adult monarch butterfly emerges from its chrysalis. Monarchs live for about 9 months

# Monarch Butterfly

Use the words in the box to complete each fax

<b>dry</b>	<b>poison</b>	<b>9</b>	<b>upside-down</b>	<b>larva</b>
<b>egg</b>	<b>3 to 12</b>	<b>Milk Weed</b>	<b>two</b>	<b>chrysalis</b>
<b>14</b>	<b>blood</b>			

1. \_\_\_\_\_ is ONLY kind of plant that a monarch butterfly can lay its egg on.
2. Monarch eggs hatch, depending on temperature, in \_\_\_\_\_ days.
3. The larvae feed on the plant leaves for about two weeks and develop into caterpillars about \_\_\_\_\_ inches long
4. The case that the caterpillar is in when it's in the pupa stage is called a \_\_\_\_\_.
5. The milkweed contains a \_\_\_\_\_ that the monarchs use as a defense.
6. When it is time to pupate, the caterpillar will hang \_\_\_\_\_ on a leaf or branch.
7. Adult Monarch Butterflies only live about \_\_\_\_\_ months.
8. The first stage of the life cycle is the \_\_\_\_\_ stage.
9. Once the caterpillar emerges from its egg it is in the \_\_\_\_\_ stage.
10. After about \_\_\_\_\_ days, the adult monarch butterfly emerges from its chrysalis
11. Caterpillars have to wait for their wings to \_\_\_\_\_ before they can fly.
12. When the butterfly emerges from its chrysalis, it has to pump \_\_\_\_\_ into its wings.