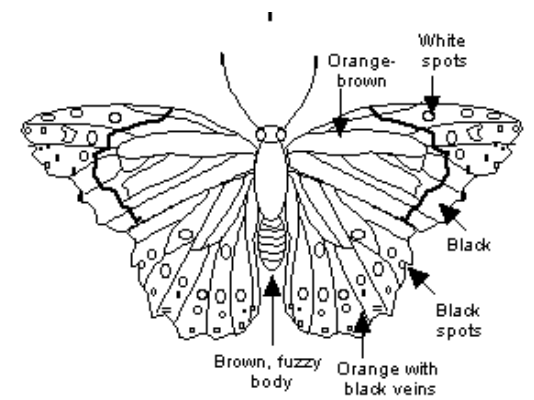
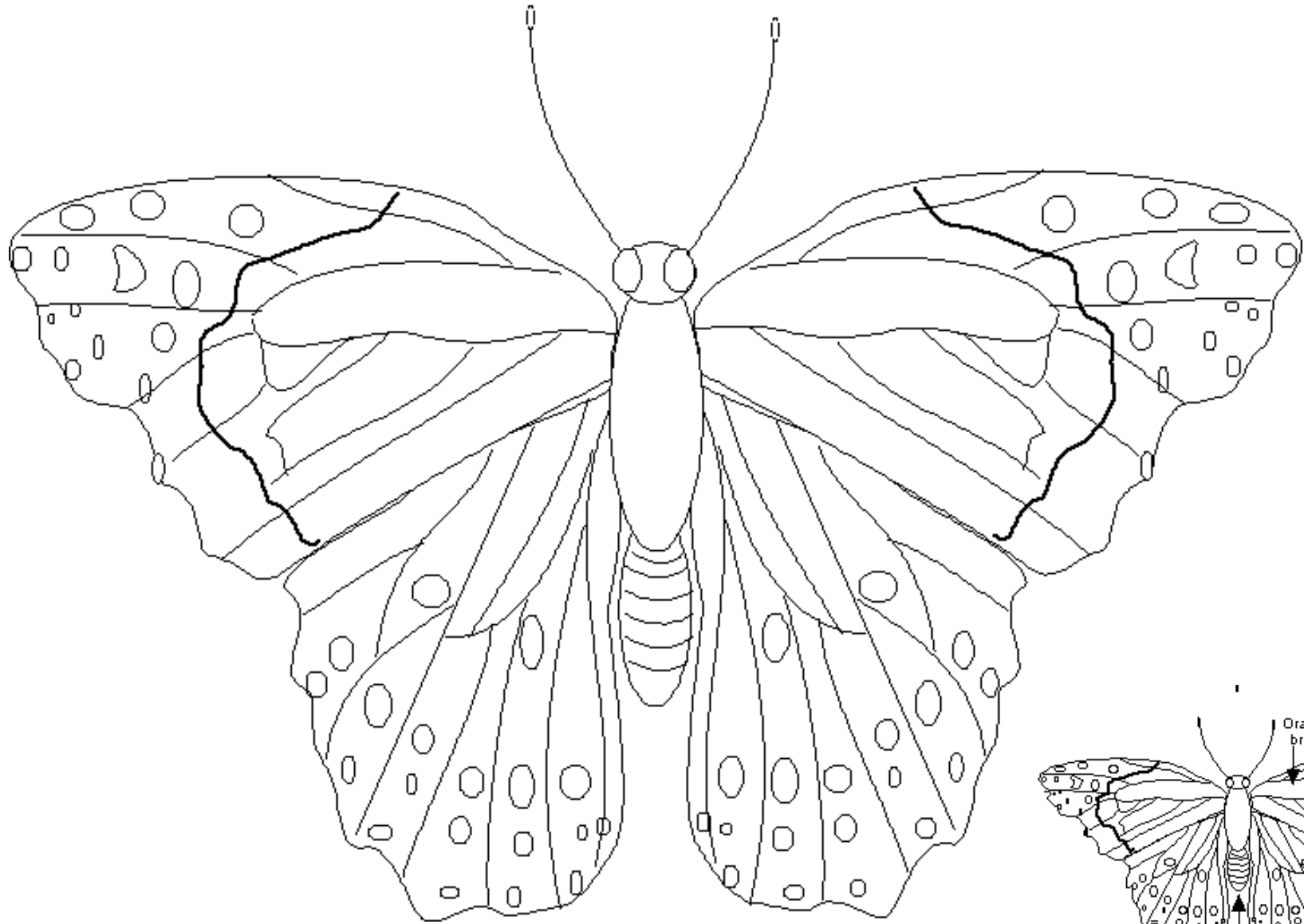
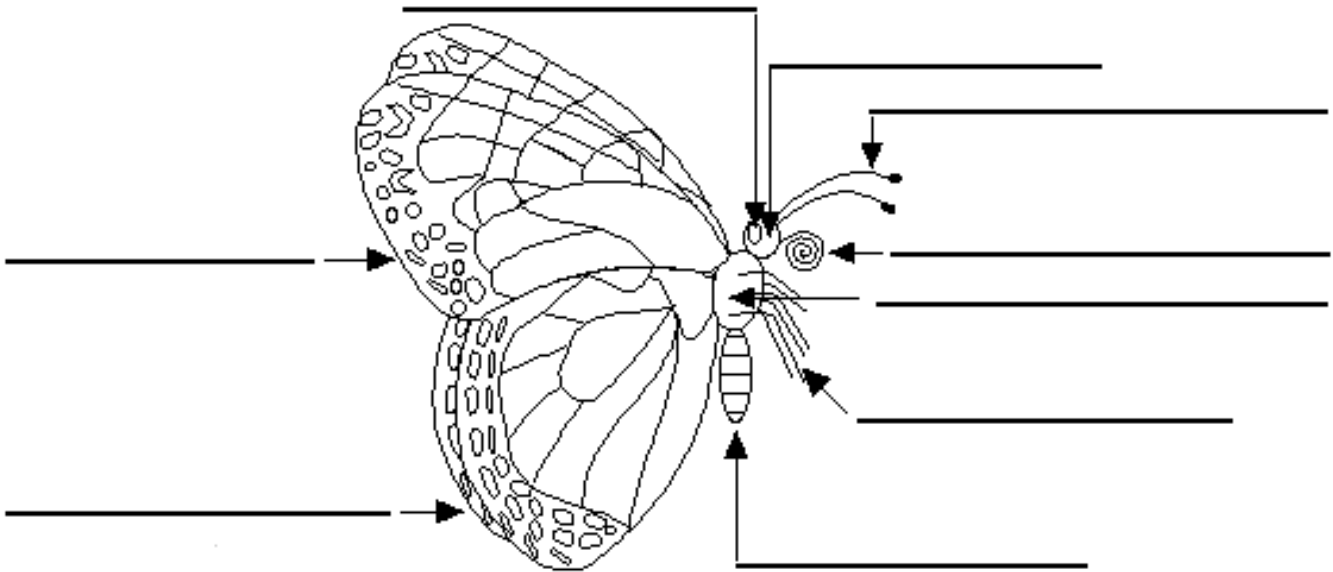


# Painted Lady Butterfly

Color



## Label the Basic Parts of a Butterfly



**Abdomen** - The abdomen is the segmented tail area of an insect that contains the heart,

**Antenna** - An antenna is a sensory appendage that is attached to the head of adult insects. Antennae are used for the sense of smell and balance. Butterflies have two antennae with clubs at the end.

**Compound Eye** - Insect compound eyes are made up of many hexagonal lenses.

**Fore wing** - The fore wings are the two upper wings.

**Head** - The head is the part of the insect that contains the brain, two compound eyes, the proboscis, and the pharynx (the start of the digestive system). The two antennae are attached to the head.

**Hind wing** - The hind wings are the two lower wings.

**Proboscis** - Adult butterflies sip nectar and other liquids using a spiral, straw-like proboscis located on their head.

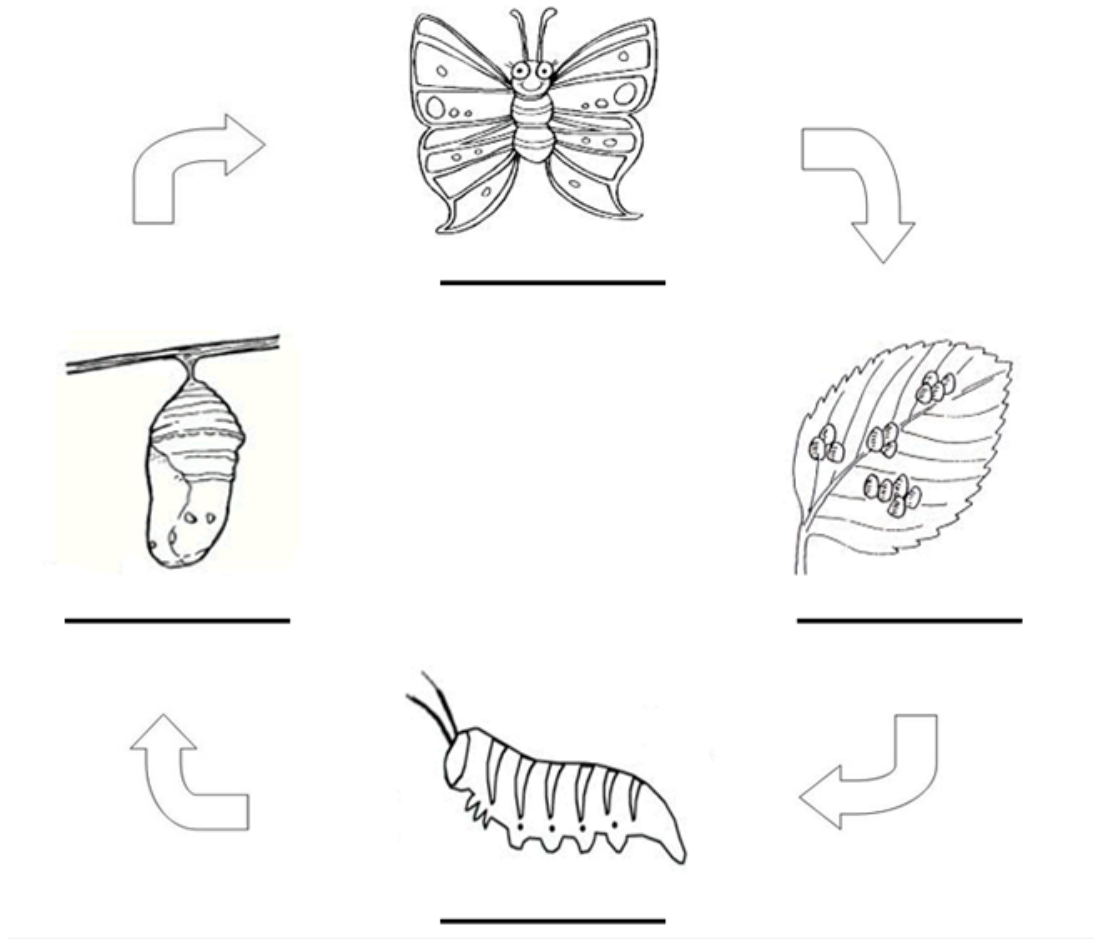
**Thorax** - The thorax is the body section between the head and the abdomen. The legs and wings attach to the thorax.

**Legs** - All adult butterflies have six legs. The two forelegs of some butterfly species are tiny.

# Life Cycle

## Painted Butterfly

Label using the descriptions below



**Egg** - pale green with ridges. The egg is the size of a pin head.

**Larva (Caterpillar)** - Black to purple with yellow-green stripes and long spines. The caterpillar attached itself upside-down to a twig or leaf and forms a hard outer shell.

**Pupa (Chrysalis)** - inside the reddish brown pupa, the caterpillar changes into a butterfly.

**Butterfly** - A fully-grown adult butterfly emerges from the chrysalis. Adults live for only a short time. They cannot eat; they only drink through their straw-like spiral proboscis. The adult female lays eggs on leaves.

# Painted Lady Butterfly

Use the words in the box to complete each fax

dry	Molting	7 to 10	pale green	tighter
egg	5 to 10	Thistle	two	chrysalis
3 to 5	blood	larva	upside-down	webbed nest

1. \_\_\_\_\_ is one kind of plant that a butterfly may lay its egg on.
2. The Painted Lady Butterfly eggs are \_\_\_\_\_ in color.
3. When a caterpillar grows, its skin gets \_\_\_\_\_.
4. The case that the caterpillar is in when it's in the pupa stage is called a \_\_\_\_\_.
5. A caterpillar will stay in the egg stage for \_\_\_\_\_ days.
6. When it is time to pupate, the caterpillar will hang \_\_\_\_\_ on a leaf or branch.
7. Adult Painted Lady Butterflies only live about \_\_\_\_\_ weeks.
8. The first stage of the life cycle is the \_\_\_\_\_ stage.
9. Once the caterpillar emerges from its egg it is in the \_\_\_\_\_ stage.
10. As the caterpillar eats it builds a \_\_\_\_\_.
11. \_\_\_\_\_ is when a caterpillar sheds its tight skin and new skin that is underneath appears.
12. In the larva stage, the caterpillar will eat nonstop for \_\_\_\_\_ days.
13. Caterpillars have to wait for their wings to \_\_\_\_\_ before they can fly.
14. The caterpillar is in the pupa stage for \_\_\_\_\_ days.
15. When the butterfly emerges from its chrysalis, it has to pump \_\_\_\_\_ into its wings.